

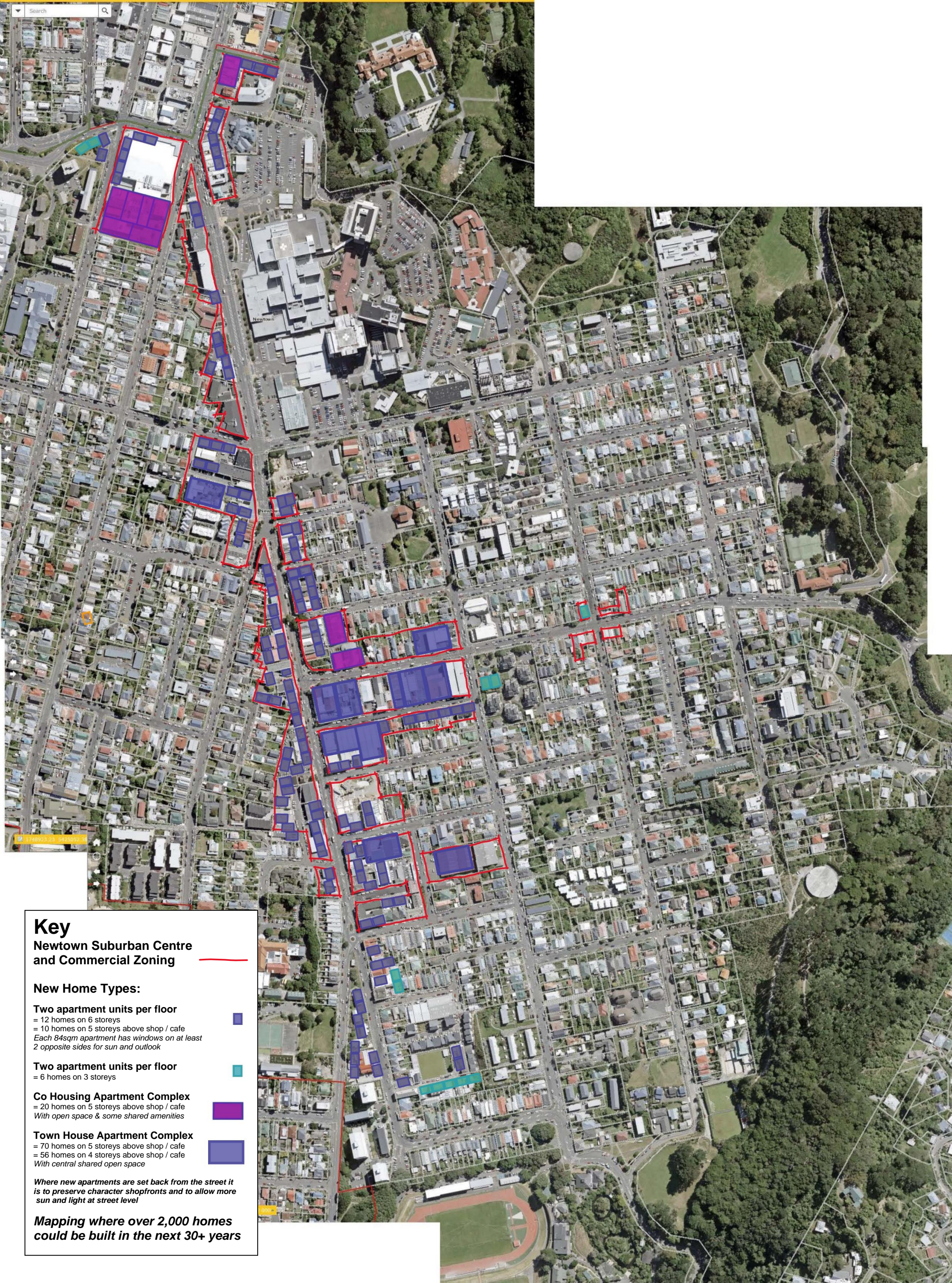


**Key**  
Newtown Suburban Centre  
and Commercial Zoning

*Currently zoned for 4 storey buildings, built  
to the property boundaries*

*With a 5m set back buffer to adjacent  
Residential Zones*





Key

Newtown Suburban Centre  
and Commercial Zoning

New Home Types:

Two apartment units per floor  
= 12 homes on 6 storeys  
= 10 homes on 5 storeys above shop / cafe  
Each 84sqm apartment has windows on at least  
2 opposite sides for sun and outlook

Two apartment units per floor  
= 6 homes on 3 storeys

Co Housing Apartment Complex  
= 20 homes on 5 storeys above shop / cafe  
With open space & some shared amenities

Town House Apartment Complex  
= 70 homes on 5 storeys above shop / cafe  
= 56 homes on 4 storeys above shop / cafe  
With central shared open space

Where new apartments are set back from the street it  
is to preserve character shopfronts and to allow more  
sun and light at street level

Mapping where over 2,000 homes  
could be built in the next 30+ years